



# 麒盛智能 QISENSE

麒盛智能

Factory

Hydraulic

Wuhu Qisheng Intelligent Equipment Co., Ltd.



Established in 2024, our company is situated in Nanling County, Wuhu City, Anhui Province—a region renowned as a "Land of Fish and Rice." We boast a highly experienced R&D team that has dedicated years to deep-rooted industry expertise, accumulating a wealth of practical development experience. Concurrently, the company possesses efficient production capabilities, enabling us to respond rapidly and effectively to meet our clients' needs.

We specialize in the research and development of hydraulic emergency drainage equipment, power units, customized large-scale hydraulic power stations, and intelligent all-terrain hydraulic drainage robots. These products are widely deployed across a diverse range of applications, including urban flood control, emergency drainage, municipal dredging, agricultural irrigation and drainage, and tunnel rescue operations. Leveraging our robust design and development capabilities, we are able to provide tailored solutions specifically engineered to address various unique operating conditions.

We are committed to driving the advancement of the hydraulic emergency rescue equipment sector. We remain steadfast in our dedication to delivering high-quality, highly competitive products, solutions, and services, thereby creating enduring value for our clients.

---

Company Profile 01

---

Intelligent Robot 03

---

Intelligent Drainage Robot 04

---

Hose Rolling Robot 07

---

Hydraulic Power Unit 08

---

Hydraulic Power Unit 10

---

Hydraulic Power Unit 11

---

---

Hydraulic Drainage Pump 12

---

Hydraulic Axial Flow Pump 13

---

Hydraulic Slurry Pump 14

---

Stainless Steel Flood  
Control Pump 15

---

WQS Sewage Cutter Pump 18

# Intelligent Robot

## intelligence<sup>+</sup>

Intelligent drainage robot is an emergency drainage device remotely controlled, Powered by the built-in engine(diesel/gasoline), Drive high-power hydraulic drainage pump, Suitable for underground garages, tunnels, subways, culverts, etc., to quickly complete drainage operations in flooded areas.Using wireless remote control system to keep workers away from dangerous areas.



**Wireless control**

**Quick Maneuver**



**Strong adaptability**

**Versatility**



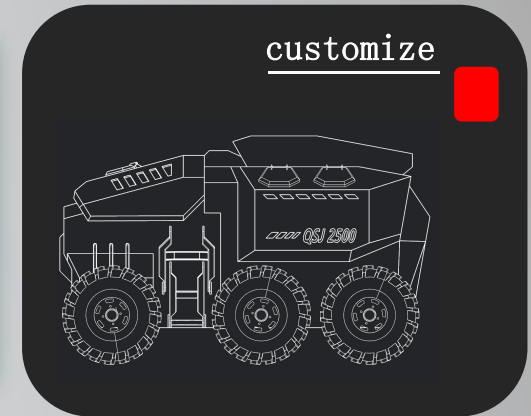
**Long battery life**



Robots have tracks and wheels to choose from, Wheeled vehicles can achieve amphibious capability in waterways, Easy to meet the needs of special environments.And the robot also provides an additional hydraulic output port, Can provide power for hydraulic tools.

<https://www.qisense-hydraulic.com/>

# Intelligent Drainage Robot

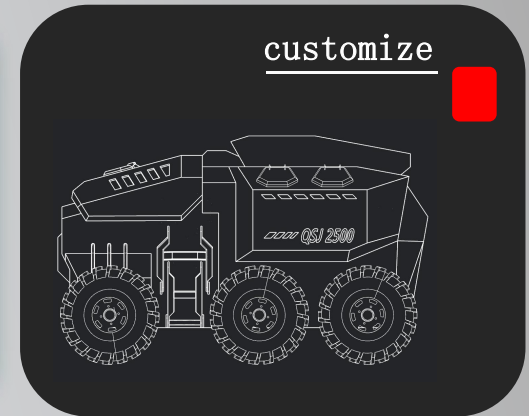


## Model / QSJ2500

Engine power (kw)	Hydraulic flow rate (Lpm)	Overall dimensions (mm)	Work pressure (bar)	Weight (kg)	Fuel tank capacity (L)	Hydraulic oil tank capacity (L)	Displacement (m³/h)
100kw/Diesel engine	80-100	2300*1570*1450	180	≤1600	50	70	2000-2500
Maximum head (m)	Number of water pumps	Walking style	Climbing angle	Walking speed (km/h)	Obstacle clearance height (mm)	Ground clearance (mm)	Wading depth (mm)
12	4	Wheeled	35°	5km	200	250	Amphibious waterway
Water wading alarm	Level alarm	Temperature Alarm	Winch (lb)	Water pump lifting	Lighting lamp	Remote control distance (m)	Continuous running time (h)
Yes	Yes	Yes	Yes	Yes	Yes	300	8

<https://www.qisense-hydraulic.com/>

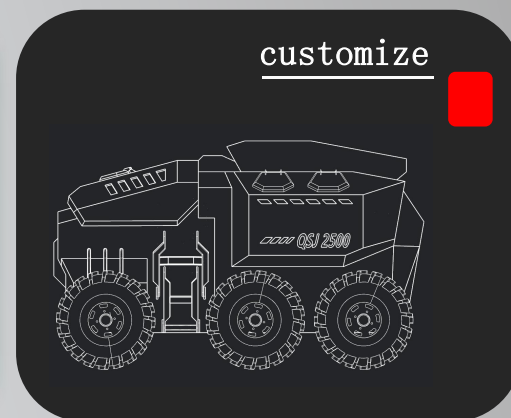
# Intelligent Drainage Robot



## Model / QSJ1200

Engine power (kw)	Hydraulic flow rate (Lpm)	Overall dimensions (mm)	Work pressure (bar)	Weight (kg)	Fuel tank capacity (L)	Hydraulic oil tank capacity (L)	Displacement (m³/h)
81kw/Diesel engine	80-100	2220*1500*1500	180	≤1600	50	70	1000-1200
Maximum head (m)	Number of water pumps	Walking style	Climbing angle	Walking speed (km/h)	Obstacle clearance height (mm)	Ground clearance (mm)	Wading depth (mm)
12	2	Crawler track	35°	2.5	250	200	650
Water wading alarm	Level alarm	Temperature Alarm	Winch (lb)	Water pump lifting	Lighting lamp	Remote control distance (m)	Continuous running time (h)
Yes	Yes	Yes	Yes	Yes	Yes	300	8

# Intelligent Drainage Robot

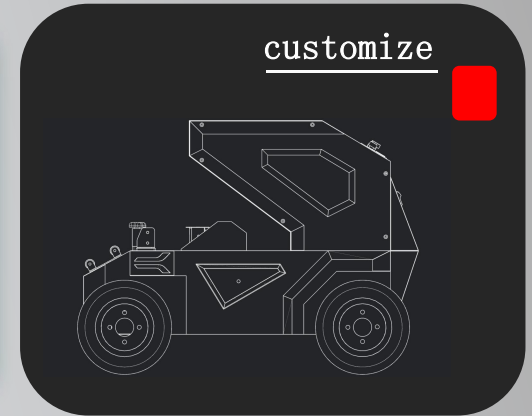
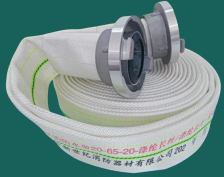


## Model / QSJ600

Engine power (kw)	Hydraulic flow rate (Lpm)	Overall dimensions (mm)	Work pressure (bar)	Weight (kg)	Fuel tank capacity (L)	Hydraulic oil tank capacity (L)	Displacement (m³/h)
35kw Diesel engine/Gasoline engine	40-80	1820*1225*1200	170	≤900	35	35	500-600
Maximum head (m)	Number of water pumps	Walking style	Climbing angle	Walking speed (km/h)	Obstacle clearance height (mm)	Ground clearance (mm)	Wading depth (mm)
12	1	Crawler track	35°	2.5	200	200	550
Water wading alarm	Level alarm	Temperature Alarm	Winch (lb)	Water pump lifting	Lighting lamp	Remote control distance (m)	Continuous running time (h)
Yes	Yes	Yes	Yes	Yes	Yes	300	8

<https://www.qisense-hydraulic.com/>

# Hose Rolling Robot



## Model / QSJ-250

Size (mm)	Weight (kg)	Voltage	Drive Type
1170*960*930	260	DC24V	Motor drive
Roll length (m)	Driving speed (km/h)	Specification of water hose	Remote control distance (m)
30	5	DN200-DN250	≥300

Water hose winding robot used for water hose deployment and winding work. When using large-diameter water hoses for emergency rescue, flood prevention and drainage, manual operation is time-consuming and laborious. Robots can help deploy the water hoses quickly. After using the water hose, due to its long length and large specifications, as well as being soaked in water, it is difficult to manually roll it up. At this time, the robot can easily roll up the water hose.

# Hydraulic Power Unit



## Portable +

The equipment is suitable for work scenarios such as road repair, road construction, and municipal maintenance. The equipment is easy to install, handle, and has strong adaptability. It can drive hydraulic picks, hydraulic saws, hydraulic wrenches, hydraulic pile drivers, and other related hydraulic tools to achieve construction projects such as crushing, cutting, splitting, pile driving, and compaction.



**Versatility**



**Long battery life**

**Strong power**

**More energy-efficient**

**Easy maintenance**

The gear pump is driven by an efficient engine, which draws oil from the tank and outputs high-pressure oil. The hydraulic valve group precisely controls the pressure, flow rate, and direction, efficiently converting mechanical energy into hydraulic energy.

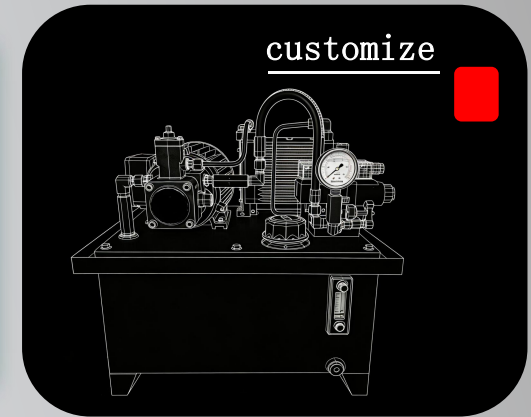
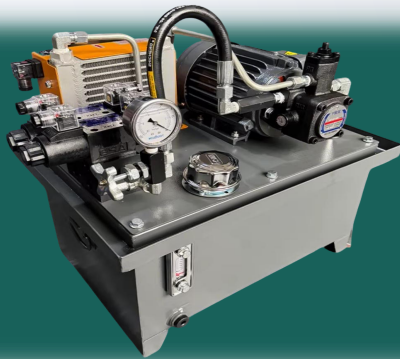
<https://www.qisense-hydraulic.com/>

# Hydraulic Power Unit



Model	Work pressure (bar)	Hydraulic flow rate (Lpm)	Size (mm)	Hydraulic oil tank capacity (L)	Fuel tank capacity (L)	Weight (kg)	Startup method
QSD-13HP/C	155	20/30	799*713*770	12	6.5	80	hand start
QSD-18HP/C	155	20/40	1050*640*790	16	20	178	electric start
QSD-23HP/C	175	30/40	1100*660*800	22	20	185	electric start
QSD-35HP/C	175	40/80	1130*660*845	22	27	205	electric start
QSD-80HP/C	200	80/120	1750*1100*1350	40	50	450	electric start

# Hydraulic Power Unit



Motor380v	Hydraulic flow rate(Lpm)	Continuous output pressure(bar)	Intermittent output pressure(bar)	Hydraulic oil tank capacity(L)	Size(mm)
1.5kw	5.7	160	200	40L	500*350*530
2.2kw	8.6	160	200	55L	490*380*650
3kw	14.4	160	200	55L	490*380*650
4kw	23	160	200	55L	490*380*660
5.5kw	28.8	160	200	100L	620*480*780
7.5kw	46	160	200	120L	750*550*850
11kw	57.6	160	200	150L	750*550*1010
15kw	90	160	200	200L	750*600*1130



<https://www.qisense-hydraulic.com/>

# Hydraulic Power Unit

## Intelligence +

Large hydraulic power stations are applied in various scenarios that require ultra large flow output, and their wide applicability can play an important role in multiple industries such as shipbuilding, steel metallurgy, mining, and construction.



*Customize*

*High hydraulic flow rate*

*Strong power*

*More energy-efficient*

Adopting a first tier brand high-power diesel engine, coupled with a high-pressure oil pump, it can sustainably and stably output high flow, high-pressure hydraulic oil. The overall design adopts noise reduction, which can reduce the interference of surrounding environmental noise.

<https://www.qisense-hydraulic.com/>

# Hydraulic Drainage Pump

## High lift <sup>+</sup>

The water pump casing and impeller are made of stainless steel casting, which is corrosion-resistant and durable, suitable for municipal drainage, sewage, urban flood control and drainage. The overall design is lightweight, compact, easy to carry and transport, and easy to operate, facilitating quick emergency response.



**Strong power**

**Easy maintenance**

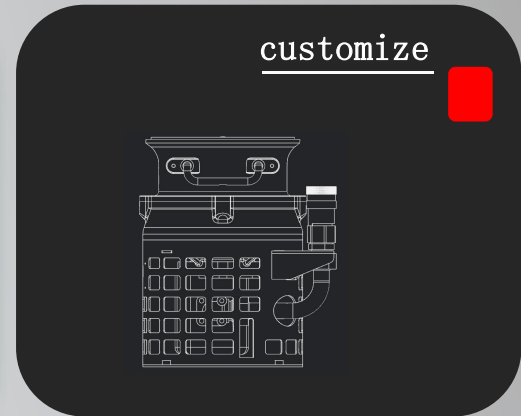
**High lift**

**High traffic**

The water pump is hydraulically driven and can be deployed in emergency power outages. It has the characteristics of high flow rate, high head, and can handle large particles. In addition to being driven by a hydraulic power station, it can also be connected to hydraulic power sources such as excavators and loaders.

<https://www.qisense-hydraulic.com/>

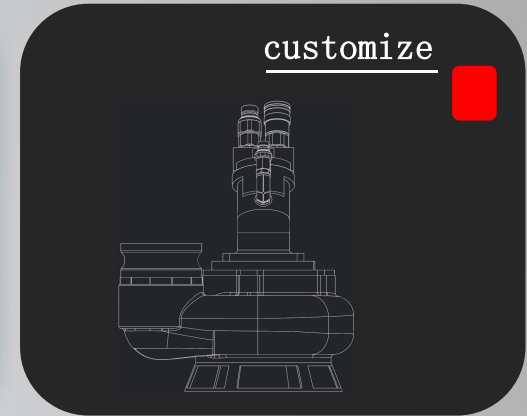
# Hydraulic Axial Flow Pump



Model	Drain Port Diameter (mm)	Maximum Drainage Capacity (m³/h)	Maximum Head (m)	Work pressure (bar)	Weight (kg)	Flow Range (Lpm)	Dimensions (mm)
QSB300-18-150	150	300	18	170	17	50-60	210*255*300
QSB600-15-200G	200	600	15	170	25	60-80	235*288*340
QSB600-12-200D	200	600	12	170	19	60-80	224*277*325
QSB1000-10-250	250	1000	10	175	55	60-80	∥
QSB1000-10-300	300	1500	8	190	60	160-180	∥

<https://www.qisense-hydraulic.com/>

# Hydraulic Slurry Pump



Model	Drain Port Diameter (mm)	Maximum Drainage Capacity (m <sup>3</sup> /h)	Maximum Head (m)	Work pressure (bar)	Weight (kg)	Flow Range (Lpm)	Dimensions (mm)
QSZB100-40-50	50	100	40	140	13	20-30	308*220*430
QSZB120-35-80	75	120	35	140	13	20-30	315*225*436
QSZB200-25-100	100	200	25	150	29	30-40	346*268*510
QSZB280-25-150	150	280	25	160	38	50-72	460*320*520

# Stainless Steel Flood Control Pump

## High lift <sup>+</sup>

The stainless steel permanent magnet synchronous multi-stage submersible electric pump adopts an oil immersed permanent magnet synchronous motor. The electric pump consists of three parts: water pump, seal, and motor. This series of electric pumps is made of 304 stainless steel material, with a compact structure, small volume, light weight, low noise, large flow rate, high head, good heat dissipation performance, good corrosion resistance, safe and reliable operation, and significant energy-saving effect.



*Easy maintenance*

*High lift*

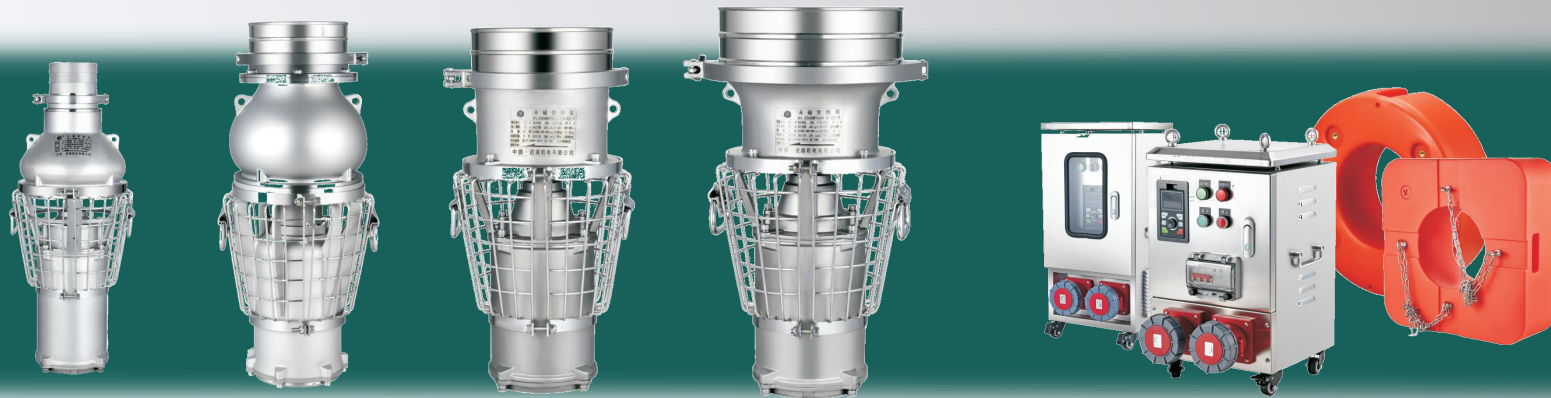
*Strong power*

*High traffic*

It can be directly submerged for work or suspended on the water surface with the help of a floating ring, and can be carried by one person. Mainly used for flood prevention and rescue, drought prevention irrigation and drainage, mine rescue, temporary pumping of municipal engineering, emergency water diversion of rivers and reservoirs, fire emergency drainage and other fields.

<https://www.qisense-hydraulic.com/>

# Stainless Steel Flood Control Pump

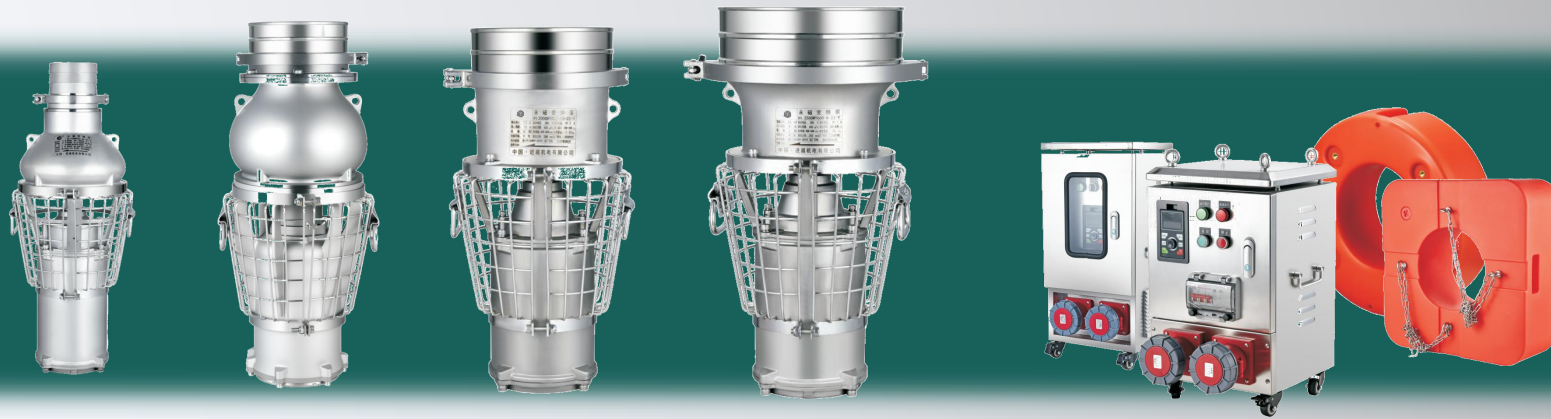


4 inch	Model	Flow (m <sup>3</sup> /h)	Head (M)	Power (kW)	Size (mm)	Weight (kg)	Size (mm)
	100QWY65-18-5.5	65	18	5.5	100	25	190x190x465
100QWY65-25-7.5	65	25	7.5	100	25	190x190x465	
100QWY65-40-11	65	40	11	100	32	280x280x535	
100QWY65-50-15	65	50	15	100	32	280x280x535	
100QWY80-50-18.5	80	50	18.5	100	34	280x280x535	
100QWY80-65-22	80	65	22	100	37	280x280x535	
100QWY100-70-30	100	70	30	100	75	380x380x750	
100QWY100-90-37	100	90	37	100	75	380x380x750	
100QWY100-100-45	100	100	45	100	78	380x380x750	
100QWY100-120-55	100	120	55	100	85	380x380x750	
100QWY100-160/2-75	100	160	75	100	110	380x380x1095	
100QWY100-200/2-90	100	200	90	100	120	380x380x1095	

6 inch	Model	Flow (m <sup>3</sup> /h)	Head (M)	Power (kW)	Size (mm)	Weight (kg)	Size (mm)
	150QWY200-7-5.5	200	7	5.5	150	22	190x190x425
150QWY200-10-7.5	200	10	7.5	150	22	190x190x425	
150QWY130-13-5.5	130	13	5.5	150	24	190x190x465	
150QWY100-17-7.5	100	17	7.5	150	24	190x190x465	
150QWY160-15-11	160	15	11	150	39	280x280x590	
150QWY160-23-15	160	23	15	150	39	280x280x590	
150QWY150-30-18.5	150	30	18.5	150	41	380x380x750	
150QWY160-32-22	160	32	22	150	41	380x380x750	
150QWY150-40-30	150	40	30	150	49	380x380x750	
150QWY150-45-37	150	45	37	150	49	380x380x750	
150QWY200-55-45	200	55	45	150	80	380x380x750	
150QWY200-65-55	200	65	55	150	80	380x380x750	
150QWY200-90-2-75	200	90	75	150	110	380x380x1095	
150QWY200-110/2-90	200	110	90	150	120	380x380x1095	
150QWY200-120/2-110	200	120	110	150	130	380x380x1095	

8 inch	Model	Flow (m <sup>3</sup> /h)	Head (M)	Power (kW)	Size (mm)	Weight (kg)	Size (mm)
	200QWY260-6-5.5	260	6	5.5	200	22	200x200x445
200QWY260-8-7.5	260	8	7.5	200	22	200x200x445	
200QWY350-9-11	350	9	11	200	26	280x280x435	
200QWY400-9-15	400	9	15	200	26	280x280x435	
200QWY600-6-18.5	600	6	18.5	200	29	280x280x440	
200QWY500-8-18.5	500	8	18.5	200	29	280x280x440	
200QWY600-8-22	600	8	22	200	31	280x280x440	
200QWY500-10-22	500	10	22	200	31	280x280x440	
200QWY250-18-18.5	250	18	18.5	200	39	280x280x535	
200QWY250-23-22	250	23	22	200	41	280x280x535	
200QWY300-25-30	300	25	30	200	45	280x280x580	
200QWY300-30-37	300	30	37	200	49	280x280x630	
200QWY400-28-45	400	28	45	200	75	380x380x730	
200QWY500-30-55	500	30	55	200	78	380x380x730	
200QWY500-35-75	500	35	75	200	82	380x380x790	
200QWY500-50/2-90	500	50	90	200	122	380x380x1120	
200QWY500-55/2-110	500	55	110	200	132	380x380x1120	

# Stainless Steel Flood Control Pump



10 inch	Model	Flow	Head	Power	Size	Weight	Size	12 inch	Model	Flow	Head	Power	Size	Weight	Size	14 inch	Model	Flow	Head	Power	Size	Weight	Size	
	(m <sup>3</sup> /h)	(M)	(kW)	(mm)	(kg)	(mm)	(m <sup>3</sup> /h)		(M)	(kW)	(mm)	(kg)	(mm)	(m <sup>3</sup> /h)	(M)		(kW)	(mm)	(kg)	(mm)				
	250QWY500-12-22	500	12	22	250	31	280x280x438		300QWY1000-7-37	1000	7	37	300	58			350QWY1800-10-90	1800	10	90	350	125	500x550x880	
	250QWY600-10-30	600	10	30	250	38	345x345x525		300QWY1000-10-45	1000	10	45	300	65	380x380x655		350QWY2000-10-110	2000	10	110	350	135	500x550x880	
	250QWY600-15-37	600	15	37	250	45	345x345x575		300QWY1000-15-75	1000	15	75	300	85	380x380x655									
	250QWY800-7-30	800	7	30	250	39	345x354x530		300QWY1200-10-55	1200	10	55	300	68	430x430x745									
	250QWY800-10-37	800	10	37	250	46	345x345x585		300QWY1500-10-75	1500	10	75	300	87	380x380x675									
									300QWY1500-15-90	1500	15	90	300	112	430x430x770									

<https://www.qisense-hydraulic.com/>

# WQS Sewage Cutter Pump



Model	Flow	Head	Power	Voltage	Size	Weight	Size
	(m <sup>3</sup> /h)	(M)	(kW)	(V)	(mm)	(kg)	(mm)
200WQAS200-9-11-WQG	200	9	11	380	200	39	300x358x635
200WQAS200-12-15-WQG	200	12	15	380	200	39	300x358x635
200WQAS200-18-18.5-WQG	200	18	18.5	380	200	41	300x358x635
200WQAS200-20-22Q-WQG	200	20	22	380	200	43.5	300x358x635

<https://www.qisense-hydraulic.com/>

# Wuhu Qisheng Intelligent Equipment Co., Ltd.



☎ Landline: 0553-7652 528

📱 Phone/Whatsapp: 14755582903

✉ Email: [winniezhao@ahqszn.com](mailto:winniezhao@ahqszn.com)

Address: Shengqiao Street, Jiafa Town, Nanling County, Wuhu City, Anhui Province, China



Factory

Hydraulic